

Scallop Processing Plant

Superior Scallop Eviscerator system



- Economical Eviscerator system
- Increases quality
- Environmental and user friendly
- Labor saving
- Safe & easy to operate

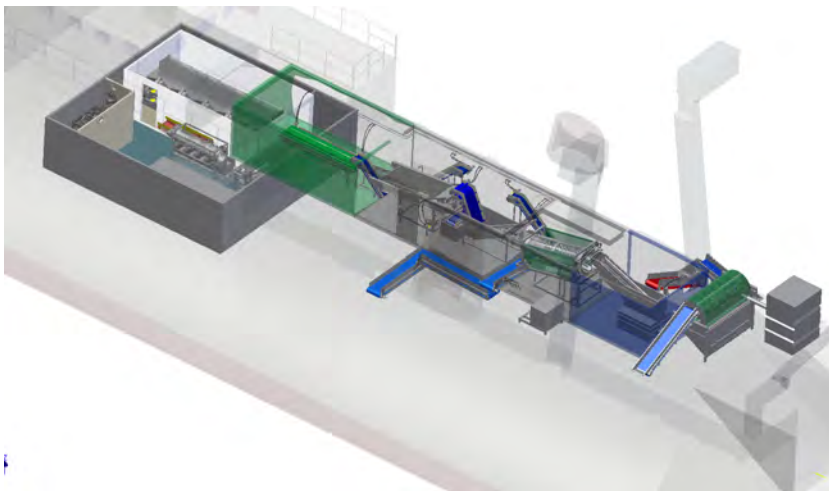


Advanced Process

Automatic solution greatly reduces manual labor for land-based and on-board factories.



All land based Scallop processing factory's are built according to customer needs and specifications.



On-board Scallop processing factory's are designed and built to each vessel specification



Shell separator



Eviscerator in action



Processed Scallop



Scallop tunnel freezer

High Quality Output

Fast, precision scallop processing, grading & freezing.
Gentle raw material handling throughout.



①



②



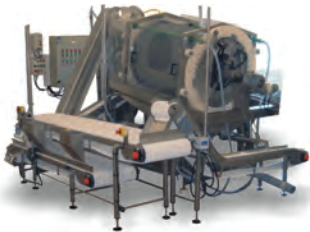
③



④



⑤



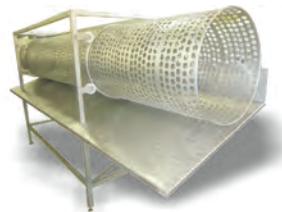
⑥



⑦



⑧



⑨



⑩



Benefits:

- 1) In-feed buffer
- 2) Scallop shell steamer
- 3) Shell separator
- 4) Brine separator
- 5) Eviscerator (drum)
- 6) Eviscerator (flat-bed)
- 7) Scallop channel grader
- 8) Scallop size sorting
- 9) Conveyors
- 10) IQF. freezing tunnel

- Complete solution
- Automatic process
- Handles raw material gently
- Easy to change between different sizes
- Capacity at your request
- Measurable labor savings
- Greater raw material yield
- Flexible grading capabilities
- Easy to clean & sanitize
- Safe & easy to operate



Eviscerator in action

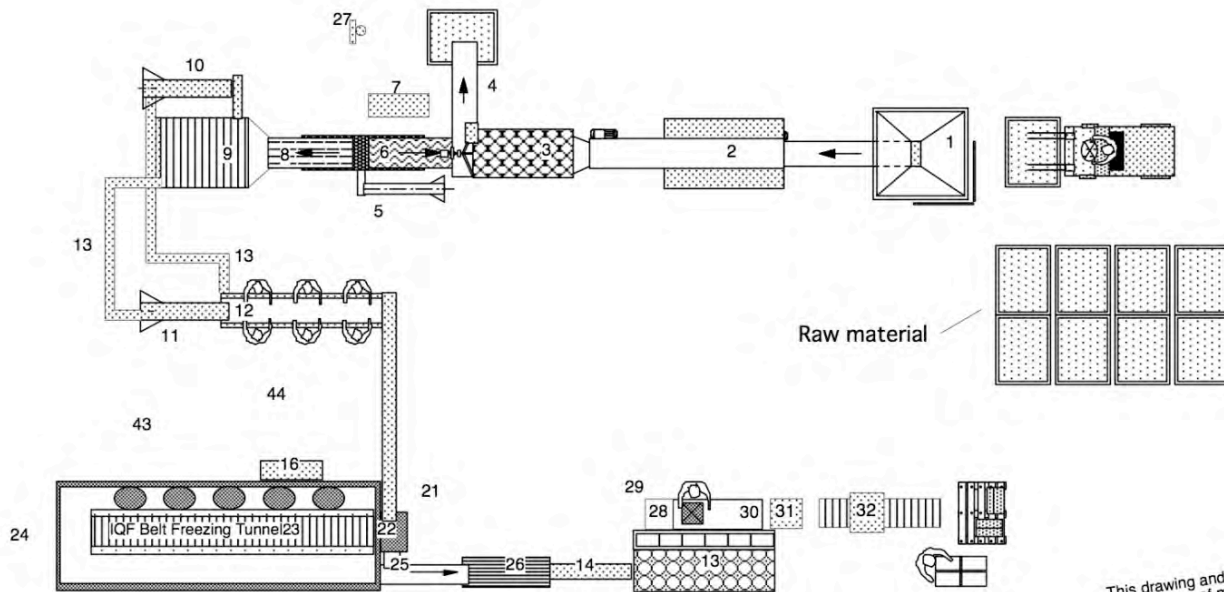


Scallop from Eviscerator conveyed sorting



Scallop size sorting

Scallop Processing Line

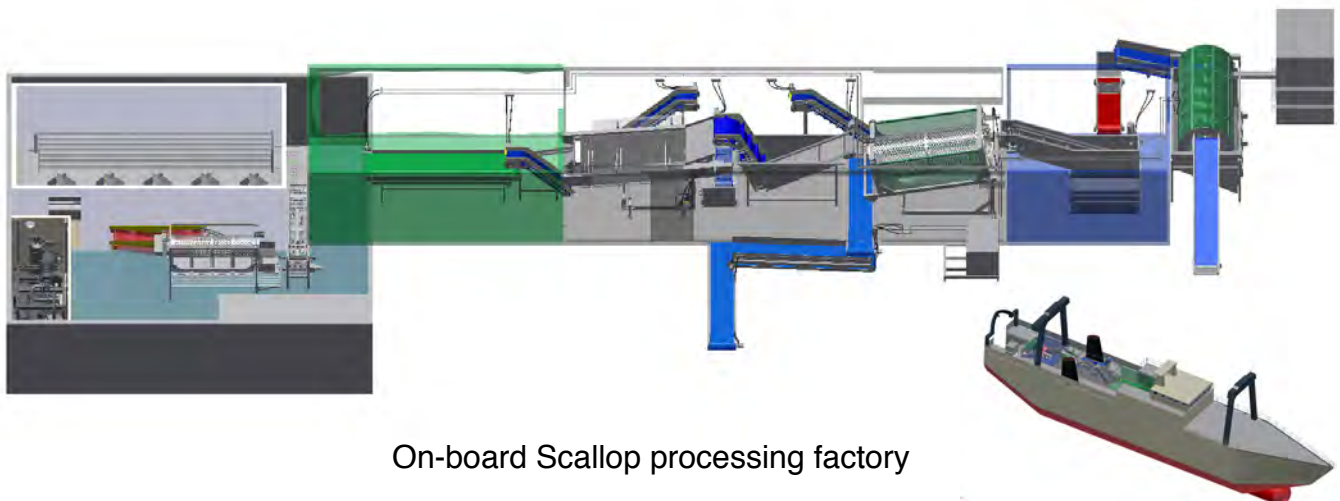


- | | |
|---|--|
| 1 Silo of stainless steel, with conveyor | 21 Conveyor for feeding freezer |
| 2 Choker small, heat exchanger or oil burner | 22 Spreader for belt |
| 3 Shucker of a tumbler type | 23 IQF freezer for without compressors |
| 4 Conveyor for empty shell to disposal. | 24 Compressors system for IQF freezer |
| 5 Conveyor to brine separator | 25 Conveyor out of freezer |
| 6 Separator for meat and shell fractions | 26 Glazing equipment |
| 7 Brine mixer for separator | 27 UV-sterilizer for glazing water |
| 8 Conveyor to eviscerator | 28 Conveyor to scale |
| 9 Eviscerator | 29 Scale with display |
| 10 Conveyor for refeeding the Eviscerator | 30 Packing table |
| 11 Conveyor for feeding fine trimming table | 31 Vacuum packing machine |
| 12 Fine trimming conveyor table | 32 Strapping machine |
| 13 Chutes for transport of scallop | |
| 14 Conveyor for feeding size grading machine. | |
| 15 Size grading machine for 6 sizes of scallop. | |
| 16 Electrical control box. | |

This drawing and description or models thereof may not be used, reproduced or transmitted in any form or by any means, included recording, or by any information storage and retrieval system, without permission in writing from the author

Capacity of whole line :
1500-2000 kg/h raw material

Customer:	
Title: Scallop Processing Plant	
Date: March, 2012	TRAUST
Desgn: [Signature]	
Drwn: [Signature]	
Appr: [Signature]	
Scale: 1:100	Dwg. No.: 9760-01



On-board Scallop processing factory

Optimize your investment with custom-made solutions

Traust Know How, Ltd., has been a leader developing fish processing equipment for over 30 years. Our qualified team of engineers with years of experience design and develop all our fish processing plants/equipment to suit the needs of the fish processing industry around the world.



Agent North America:
OGO Global, LLC. Lynnwood, WA 98087 USA.
Office: +1-425-608-0270 or 425-242-8152
info@ogo-global.com www.ogo-global.com

TRAUST
KNOW HOW LTD.
www.traust.is traust@traust.is
Office phone: +354-516-3000